
EasyPower Install Guide Revised

1 Prior to Installation

1.1 Hardware requirement

- 1GHz or higher processor
- 200M or more hard disk space
- 1024x768 monitor resolution or above
- 256M or more RAM
- USB interface and cable
- LAN interface and cable

1.2 System Support

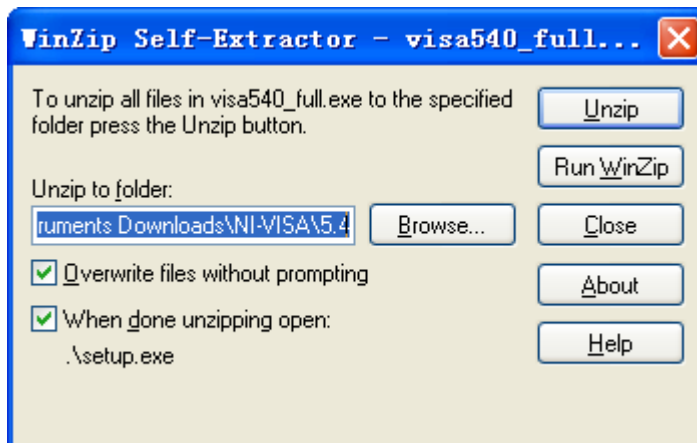
- Microsoft Windows 2000, XP system
- Win7 32bit and 64bit system
- Vista 32bit and 64bit system
- Windows 8 32bit and 64bit system.
- Windows 10 32bit and 64bit system

1.3 Software requirement

NI-VISA:

Before installing the EasyPower application, you have to install NI-VISA 5.4, which you can download from the [NI-VISA](http://www.ni.com/download/ni-visa-5.4/4230/en/) web site at: <http://www.ni.com/download/ni-visa-5.4/4230/en/>. After you download the file you can follow the steps below to install it:

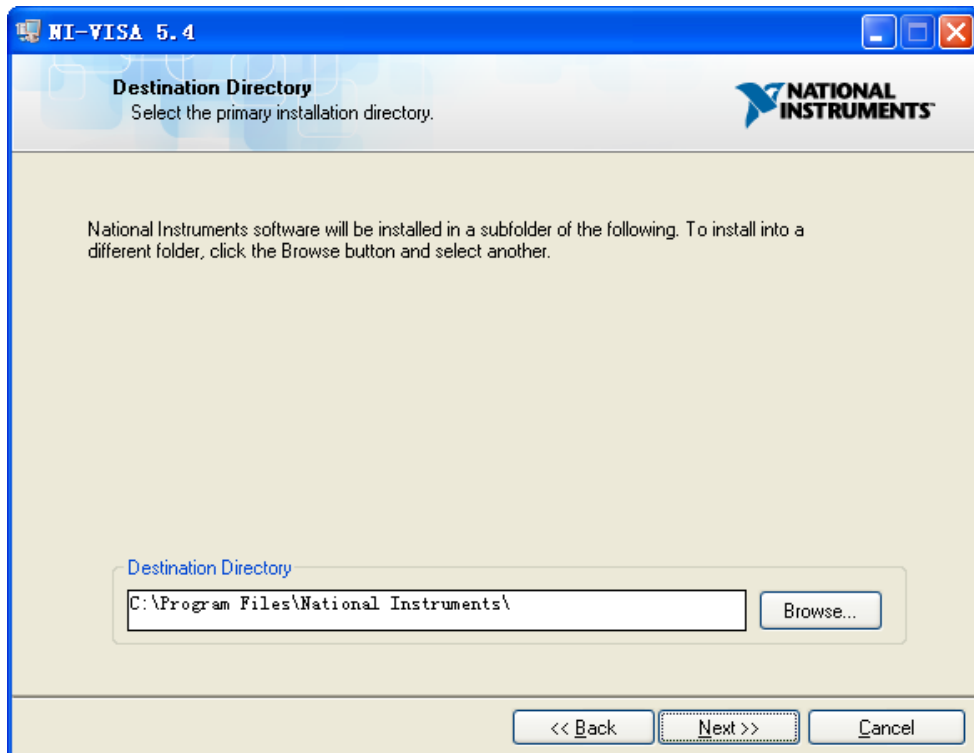
- a. Double click the visa540_full.exe, dialog shown as below:



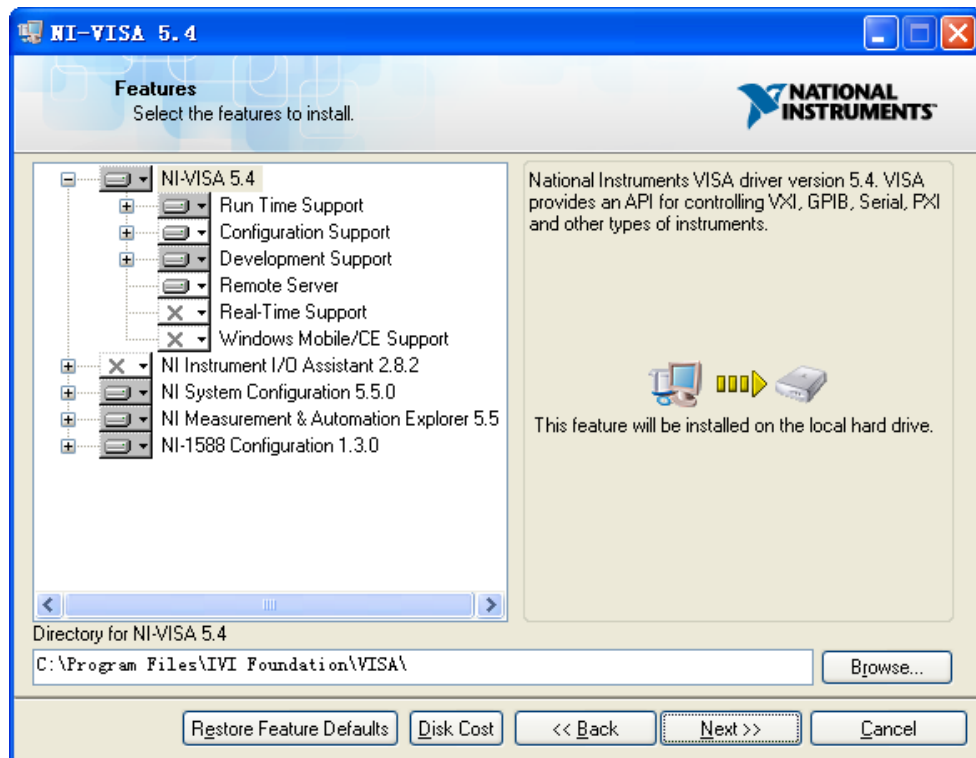
- b. Click Unzip, the install process will launch after unzipping files. If your computer needs to install .NET Framework 4, its Setup process will auto start.



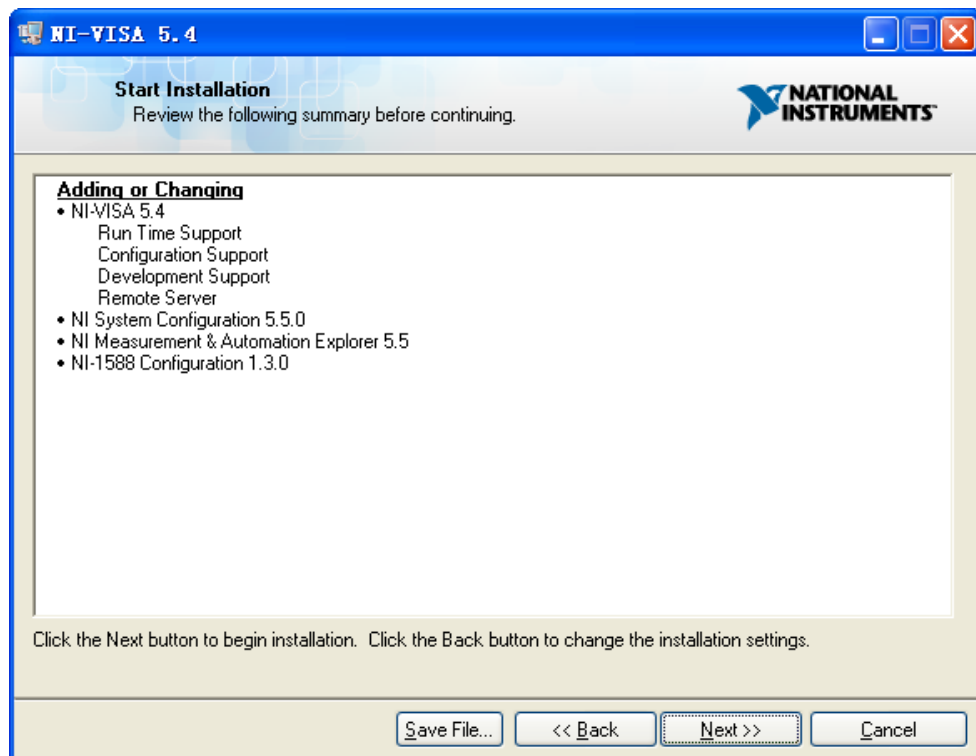
- c. The NI-VISA install dialog is shown above. Click Next to start the installation process.



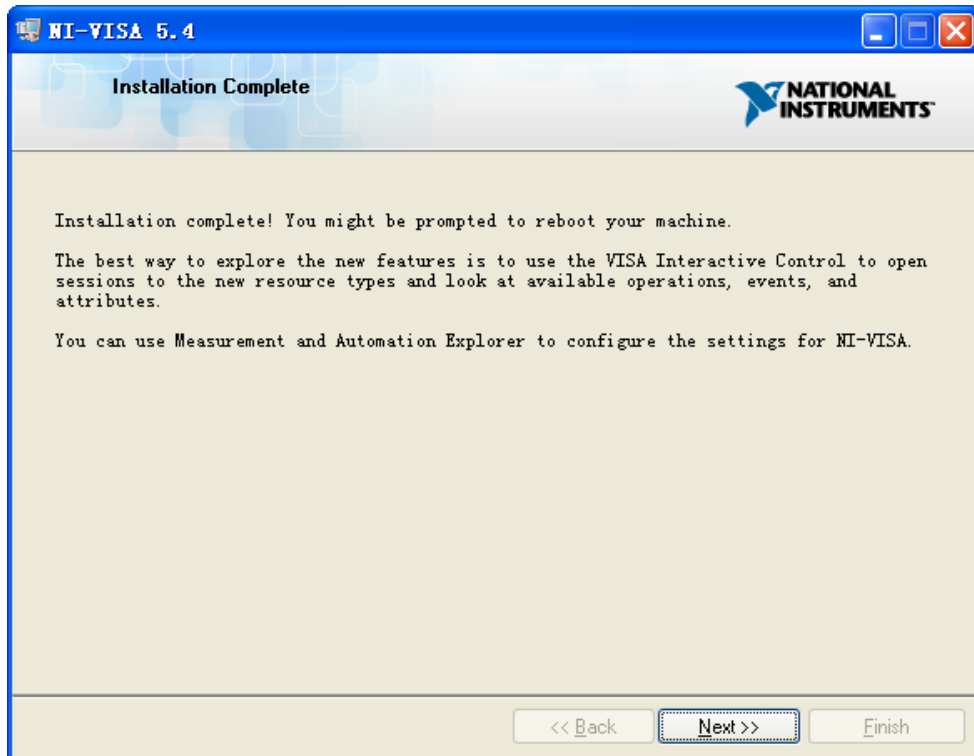
- d. Set the install path, default path is "C:\Program Files\National Instruments\)", you can change it. Click Next, dialog as shown above.



- e. Click Next twice, in the License Agreement dialog, select the “I accept the above 2 License Agreement(s).”, and click Next, dialog as shown below:



- f. Click Next to begin installation.

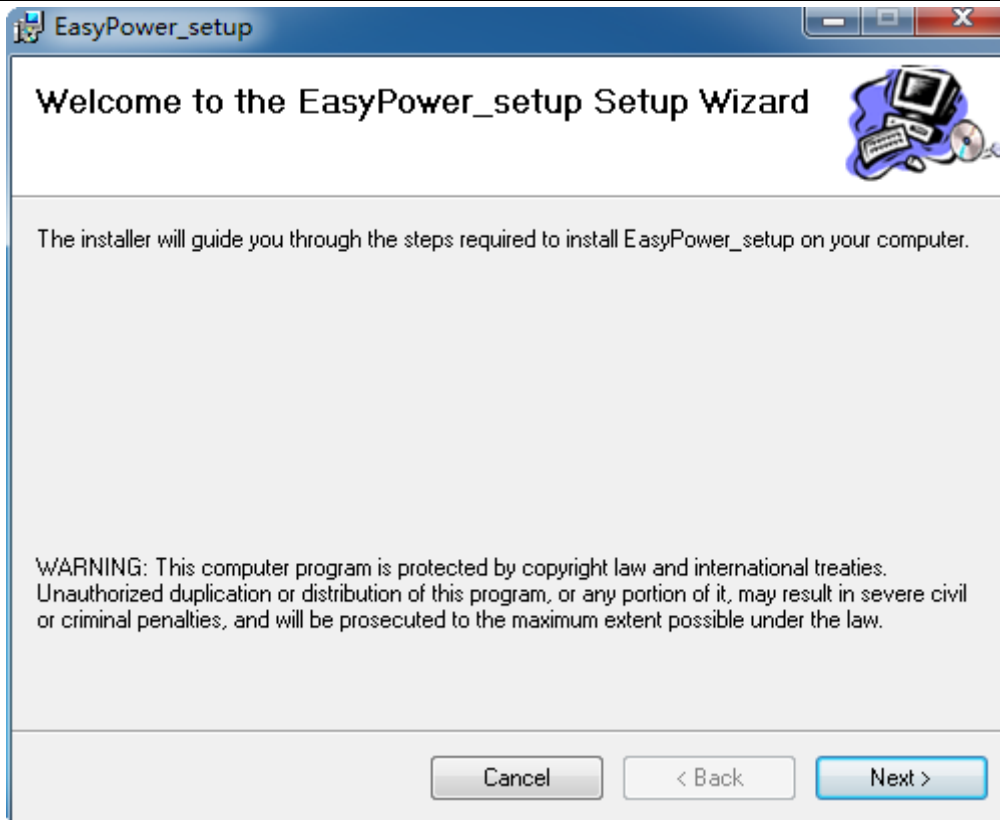


g. Now the installation is complete, reboot your PC.

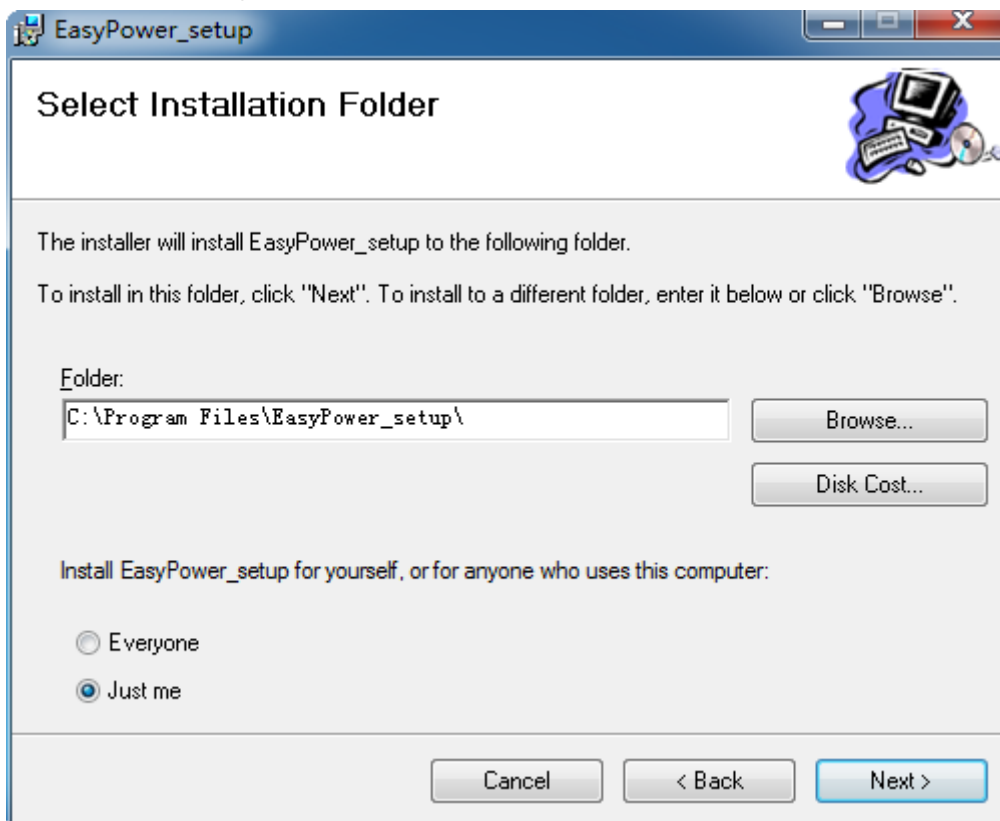
If you don't want to install the tools in NI-VISA, you can install only the NI-VISA runtime engine, which is much smaller than the full version. For example, download [NI-VISA Run-Time Engine 5.4](#) to your PC and install it as default selection. Its installation process is similar to the full version.

2 EasyPower Software Installation

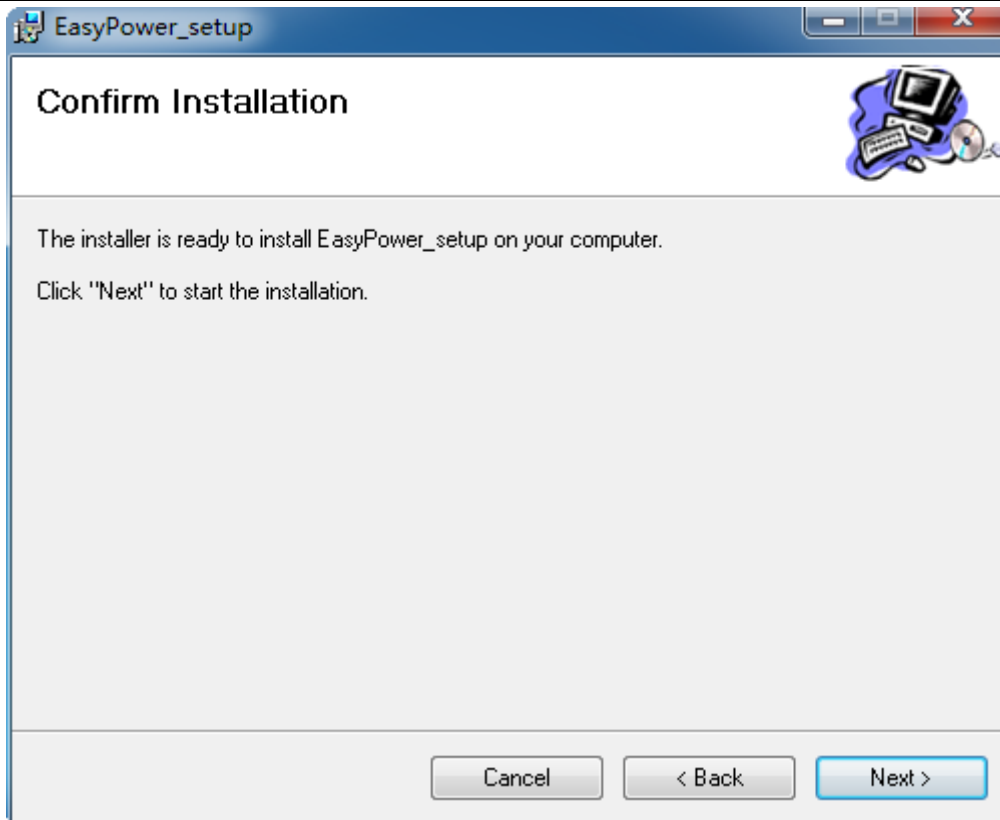
a. Download the software “EasyPower” on the Siglent’s official website(<https://www.siglentamerica.com/>) and double click on the EasyPower.setup file, launch the install process, dialog as shown below:



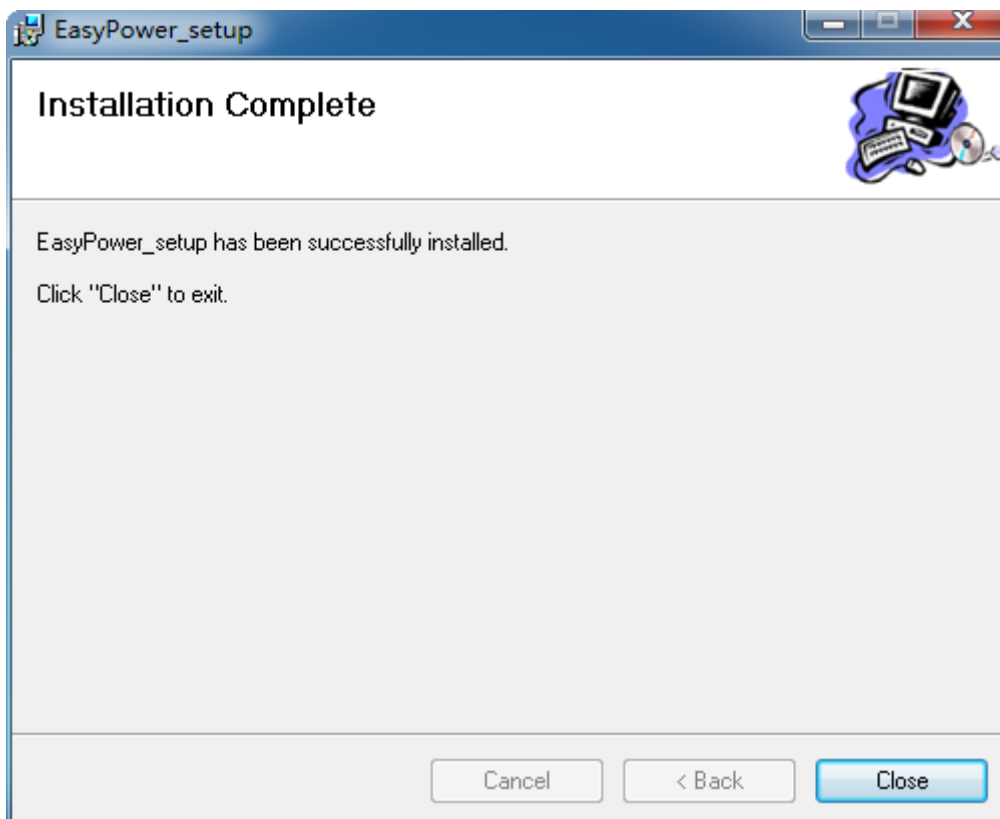
- b. Click next, dialog as shown below:



- c. Set the install path, default path is "C:\Program Files\EasyPower_setup\", you can change it, click Next, dialog as shown below:



- d. Click Next to start the installation:



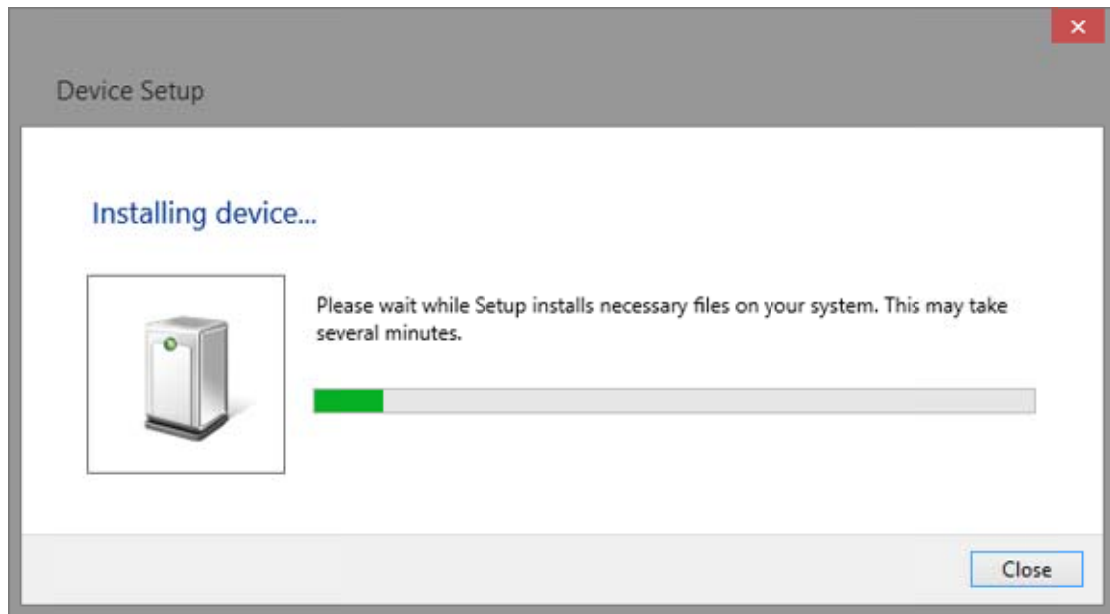
- e. Wait for the installation to complete and then Click "Close" to exit.

2.1 Connect the Instrument and PC

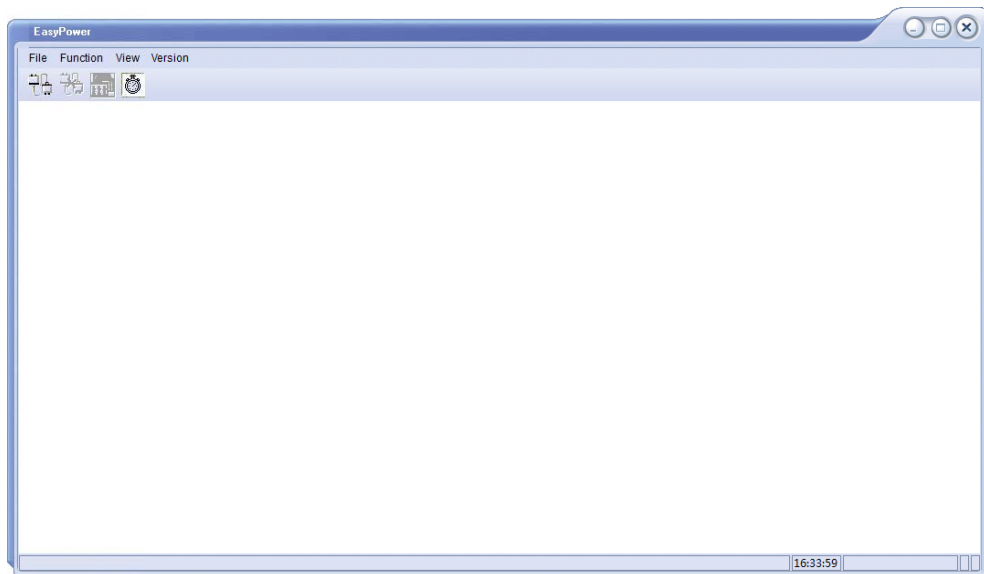
Depending on your specific model your Power Supply may be able to communicate with a

PC through the USB or LAN interface. This manual takes the USB as an example. (For instructions to communicate with a PC through the LAN interface see the User Manual.)

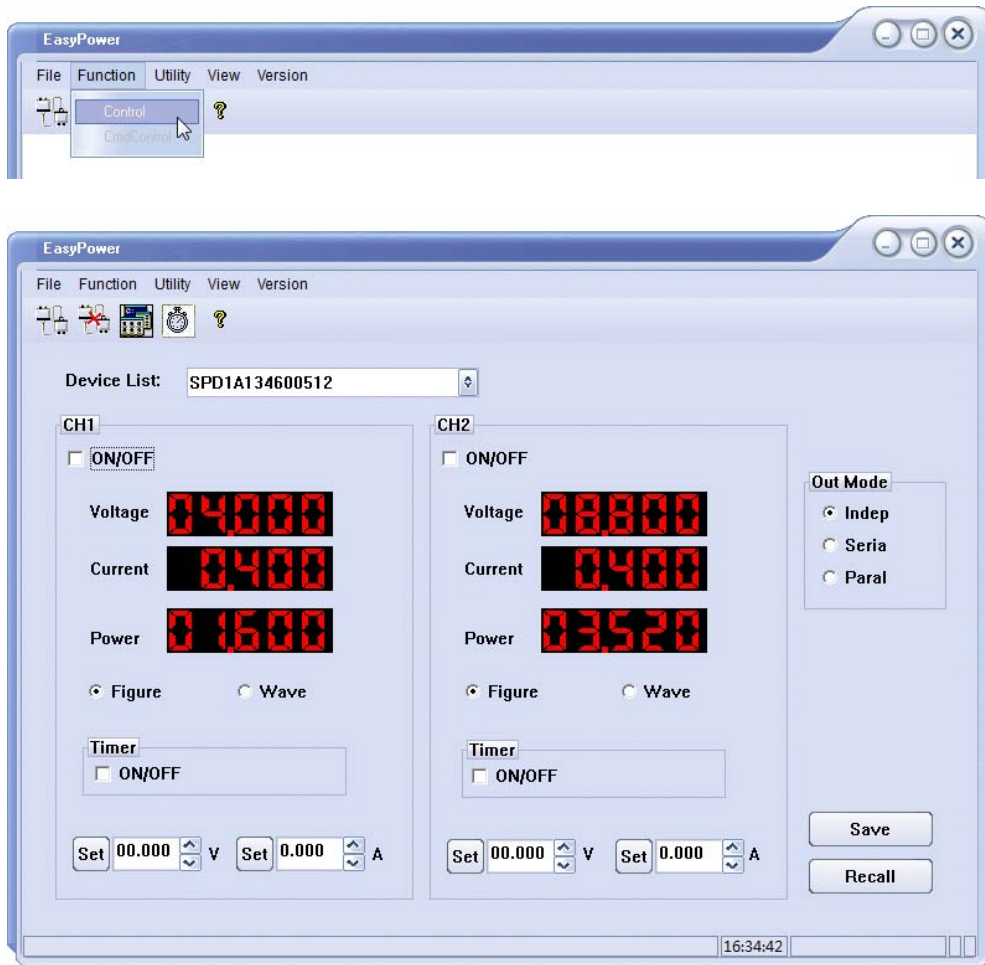
- a. Connect the USB Device interface at the rear panel of the power supply and the USB Host interface of the PC using a USB cable. Assuming your PC is already turned on, turn on your power supply and your PC will display the “Device Setup” screen as it automatically installs the device driver as shown below.



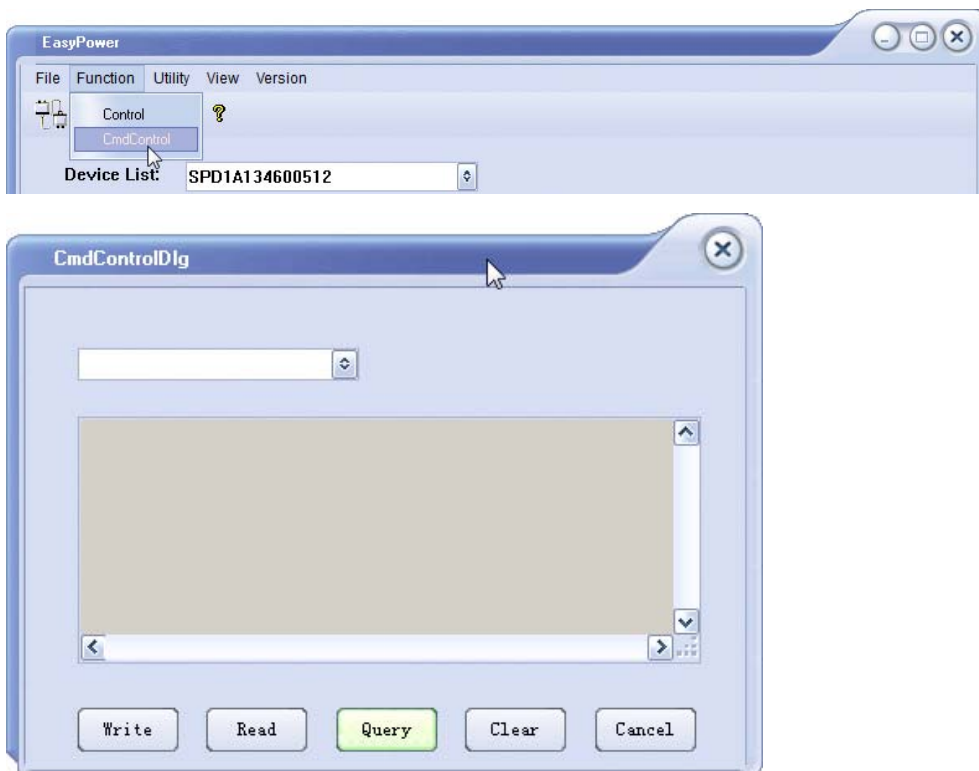
- b. Wait for the installation to complete and then proceed to the next step.
- c. Launch EasyPower, the application as shown below.



- d. Click Function>>Control, and you can communicate with the device in the application, the return information as shown below:



e. Click Function>>CmdControl, the Read wave dialog as shown below:



- f. Choose *IDN? from drop down menu and click Query and then get the return information, the result as shown below:

